

LPG 拉断阀 LPG Breakaway

- 特点**
螺纹: M27 × 1.5
材质: 不锈钢
最大拉力: 120Bar
流量: 5-50L/min

Characteristic
Thread:M27 × 1.5
Material:Satinless Steel
Max.Pull Force:120Bar
Flow Rate:5-50L/min



LPG 差压阀 LPG Differential Valve

- 特点**
工作压力: 18Bar
压差: 0.3Bar
流量: 5-60L/min

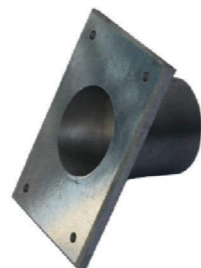
Characteristic
Working Pressure:18Bar
Pressure Difference:0.3Bar
Flow Rate:5-60L/min



LPG 枪架 LPG Nozzle Holder

- 特点**
材质: 不锈钢

Characteristic
Material:Satinless Steel

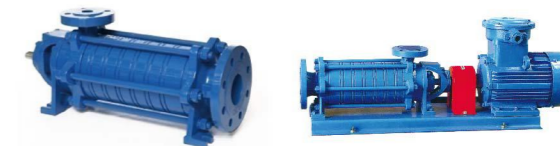


LPG 胶管 LPG Hose



DB65 LPG 泵 DB65 LPG Pump

- 特点**
离心式液化气多级泵
采用水平结构，共6级
机械密封，无需冷却
- Characteristic**
Centrifugal liquid gas multi-stage pump
Horizontal structure, 6 stage
Mechanical seal without cooling



技术参数 Technical Specification

产品型号 Model	描述 Descriptions	泵参数 Pump Speed	流量 Flow Rate	最大压力 Max Pressure	电机功率 Motor Power	适用结构 Applicable structure
DB65	Inlet 2.5", Outlet 1"	1450RPM	45L/min	4Bar	4kW	联轴驱动 Coupling Drive

LYB2000 LPG 泵 LYB2000 LPG Pump

技术参数 Technical Specification

产品型号 Model	描述 Descriptions	泵参数 Pump Speed	流量 Flow Rate	最大压力 Max Pressure	电机功率 Motor Power	适用结构 Applicable structure
LYB2000	Inlet 2", Outlet 2"	650RPM	261L/min	3.4bar	7.5kw	皮带传动 belt

